

Structural Design & Basement Renovation

Princeton Jct., New Jersey

Project Overview

This basement renovation project included structural analysis and design services to remove and relocate a structural column as part of a new floor plan. A larger beam was designed to remove existing basement columns which then allowed for larger clear spaces, furniture and enhanced circulation. The project included approximately 750 square feet of additional living space to this modern ranch home.

The construction included interior structural framing modifications, complete interior renovation, a new kitchen area, entertainment center, fitness area, additional storage spaces and high-end finishing materials.

Pisano Development Group provided preliminary analysis, design services and consulting services during construction.

Contact Us

Pisano Development Group, LLC
1 Craven Lane, P.O. Box 6556
Lawrenceville, NJ 08648

(609) 203-8639

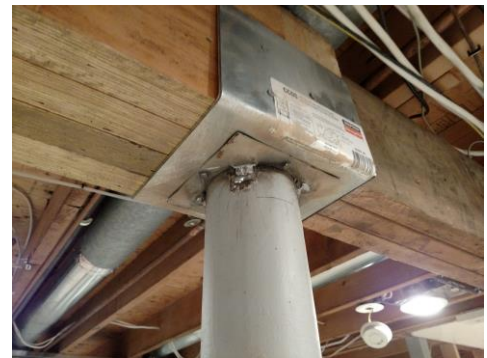
www.pisanodevelopment.com



Planning and Pre-Construction



New Beam Design and Framing Construction



Column Removed for Larger Open Areas



Interior Finishes and Features

